



February 15, 2025

Norwell High School – Ossian, IN

**CONTEST LOCATION**

Norwell High School  
1100 E US 224  
Ossian, IN 46777

# Welcome to Norwell High School

Directors,

We are excited to welcome you to Norwell High School for the start of the 2025 IPA Season. On behalf of the Norwell Bands and Norwell Community Schools, I want to thank you all for choosing us to help you start your season off right! I am honored to serve you all in the role of Contest Director at NHS, and I am open to all feedback you may have that will make our event go even more smoothly in the future. Please read through this packet carefully to ensure that you are familiar with important details and changes we have made to our event since we last hosted you.

Our staff, students and volunteers are dedicated to making sure you and your students have a wonderful experience on this day. Please contact us with any questions that may come up over the next couple of weeks. We look forward to hosting you and your amazing students!

All the best,

*Samuel Wells*

Mr. Samuel Wells  
Director of Bands  
Norwell High School



**NORWELL BANDS**

## **DIRECTOR INFORMATION**

### **UNIT CHECK-IN**

Buses will enter from the NORTHEAST (Middle School) entrance of the campus, off US-224, where you will be directed toward Equipment Unloading. All bus parking will be on the SOUTH side of NHS. Staff may park in the main parking lot outside the Unit Entrance, with their buses. Director check-in is located in the Equipment Holding area, immediately when you enter the Auxiliary Gym (Door #53).

### **CHANGING FACILITIES**

Restrooms/changing facilities will be located near the Unit Check-In area, as well as near the “Homeroom” areas. These restrooms are not designed to hold several groups at once, so try your best to be quick and share the space with other units. Please advise your students to treat our facilities as they would their own.

### **EQUIPMENT/PROPS**

Equipment/prop holding is in the Auxiliary Gym. Units will unload equipment into the Auxiliary Gym/holding area through Door #53, then equipment trailers will park in the SOUTH parking lot with buses. We will have volunteers to help with unloading in case your student performers will not be there to unload.

\*Please note that you cannot stay in the unloading area for long, as there will be more units entering after you. It is crucial that units arrive approximately one hour before their Transition time.\*

Prop personnel will be responsible for moving props to the Prop Holding Area, in the lobby just outside the South entrances of the performance gym. From here, your students can pick them up before staging. Our volunteers will direct you to this area. Alternatively, your props can travel with the performers through the warm-up area and on to staging at the conclusion of your warm-up time. Following your performance, you will reload your equipment through door #59, immediately as you exit the performance gym. There will **not** be a designated tarp re-folding area.

## **WARM-UP AND LINE-UP**

Check the enclosed schedule for your proper line-up and warm-up times (see map for warm-up areas). Our schedule will align with regulations set by IPA. No playing will be permitted outside of the warm-up area while indoors. Please restrict playing to the warm-up areas during your warm-up time. Timing penalties will not be enforced, but we ask that everyone please cooperate so that this day can be a positive experience for all involved.

## **PERFORMANCE ENTRANCE/EXIT**

Each Unit will enter the gym through the staging area on the SOUTHEAST corner of the Performance Gym. Props can be picked up en route to the gym. We will be using a HORIZONTAL Time Line. Set-up will occur on the back side of the gym.

At the conclusion of the performance, units will use the EAST side of the Time Line to refold their tarp and exit to the equipment loading area. As previously stated, there will not be a designated tarp re-folding area, so do your best to fold the tarp properly before exiting the performance gym.

**\*EACH UNIT WILL EXIT AT THE SOUTHWEST CORNER OF THE PERFORMANCE GYM AND PROCEED TO YOUR EQUIPMENT TRAILERS.\***

\*In the performance gym, we have basketball goals on the floor. They will be moved off the performance area, but they may cause some difficulty for units needing to utilize space on the sides of the floor.\*

## **JUDGES COMMENTS, SCORE SHEETS, AND RECAPS**

Judges' commentary is recorded digitally and will be available in Competition Suite. Commentary will be available immediately after your performance. Recaps will also be available through Competition Suite. If you have any questions or difficulties accessing this information, please inform us at Headquarters.

## **JUDGES CRITIQUE**

Critique is located in Headquarters (NHS Media Center), which is Northeast of the performance gym. Your guides would be happy to provide directions if you have difficulty finding the Media Center. Critique will begin immediately following Awards. Please let us know if you plan to attend Judges' Critique prior to the day of the event.

## **CONCESSIONS & RESTROOMS**

The Norwell Music Boosters will be operating the concession stand for spectators, located in the Cafeteria. Restrooms are located on both sides of the North lobby as you exit the Performance Gym. Units will be assigned restroom facilities as well as having access to restrooms after the completion of their performance.

## **HOSPITALITY ROOM**

Director & Driver Hospitality is located in the NHS Media Center, the same as Headquarters. This is labeled on the attached map. Volunteers at Unit Check-In can help you find this as well.

## **SCHOOL WI-FI**

Wireless internet can be accessed by guests using the “NWCS Public” network.

## **SPECTATOR INFORMATION**

### **PARKING**

Spectators will enter from the North entrance of the campus along N 100 E. All spectator parking will be in the high school parking lot, located on the North side of the campus. Spectators will enter Door #20, where the “Tickets” sign is located. Handicap parking is directly in front of this entrance.

### **GATE ADMISSION**

\$10 Adults / \$8 Students (K-12, College) & Seniors 65+ / children 6 and under are free

### **AWARDS**

Awards for ALL classes (PRA, PSCA, PSA, PSO) will take place at 9:00 pm (EST), following Norwell Winter Guard’s exhibition performance.

## **DIRECTIONS TO NORWELL HIGH SCHOOL**

### **From North on I-69 (Fort Wayne)**

- Take Exit 286 toward Markle/Decatur
- Turn left (east) onto US-224 E/E Markle Rd
- Follow US-224 E for about 8 miles
- Turn right onto N 100 E
- Spectators take the first entrance on the left

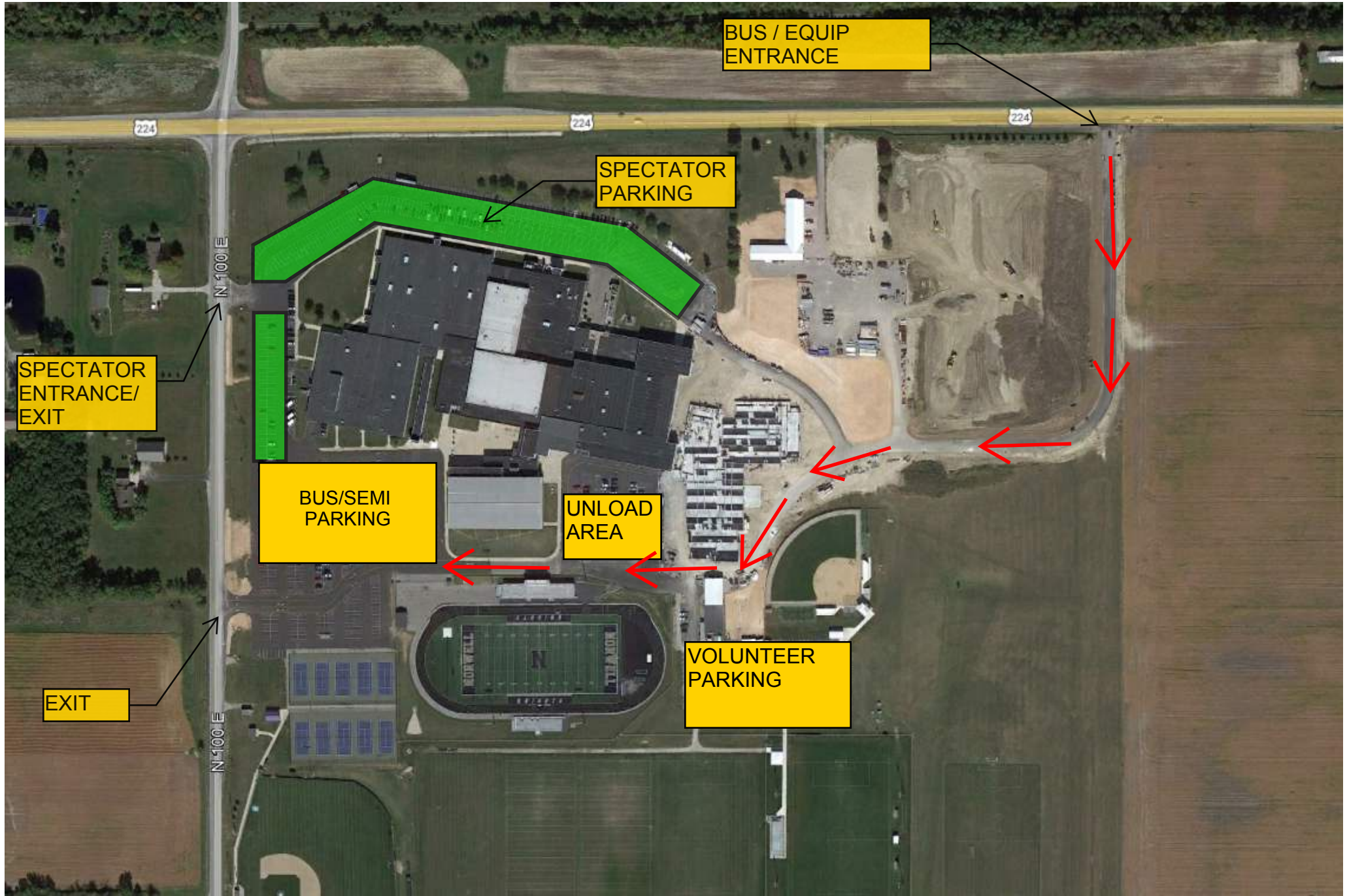
### **From South on I-69 (Indianapolis)**

- Take Exit 286 toward Markle/Decatur
- Turn right (east) onto US-224 E/E Markle Rd
- Follow US-224 E for about 8 miles
- Turn right onto N 100 E
- Spectators take the first entrance on the left

## **EMERGENCY CONTACTS**

In case of an emergency Friday night or Saturday morning, please call/text:

- Sam Wells – Director of Bands  
(260) 446-9457 / [sam.wells@nwcs.k12.in.us](mailto:sam.wells@nwcs.k12.in.us)
- Jennifer Martin – Norwell Band Booster President  
(574) 808-9177
- HS Band Office  
(260) 543-2213 ext. 7302
- Brooke Basso – IPA Administrative Director  
[admin@indianapercussion.org](mailto:admin@indianapercussion.org)



BUS / EQUIP  
ENTRANCE

SPECTATOR  
PARKING

SPECTATOR  
ENTRANCE/  
EXIT

BUS/SEMI  
PARKING

UNLOAD  
AREA

VOLUNTEER  
PARKING

EXIT

224

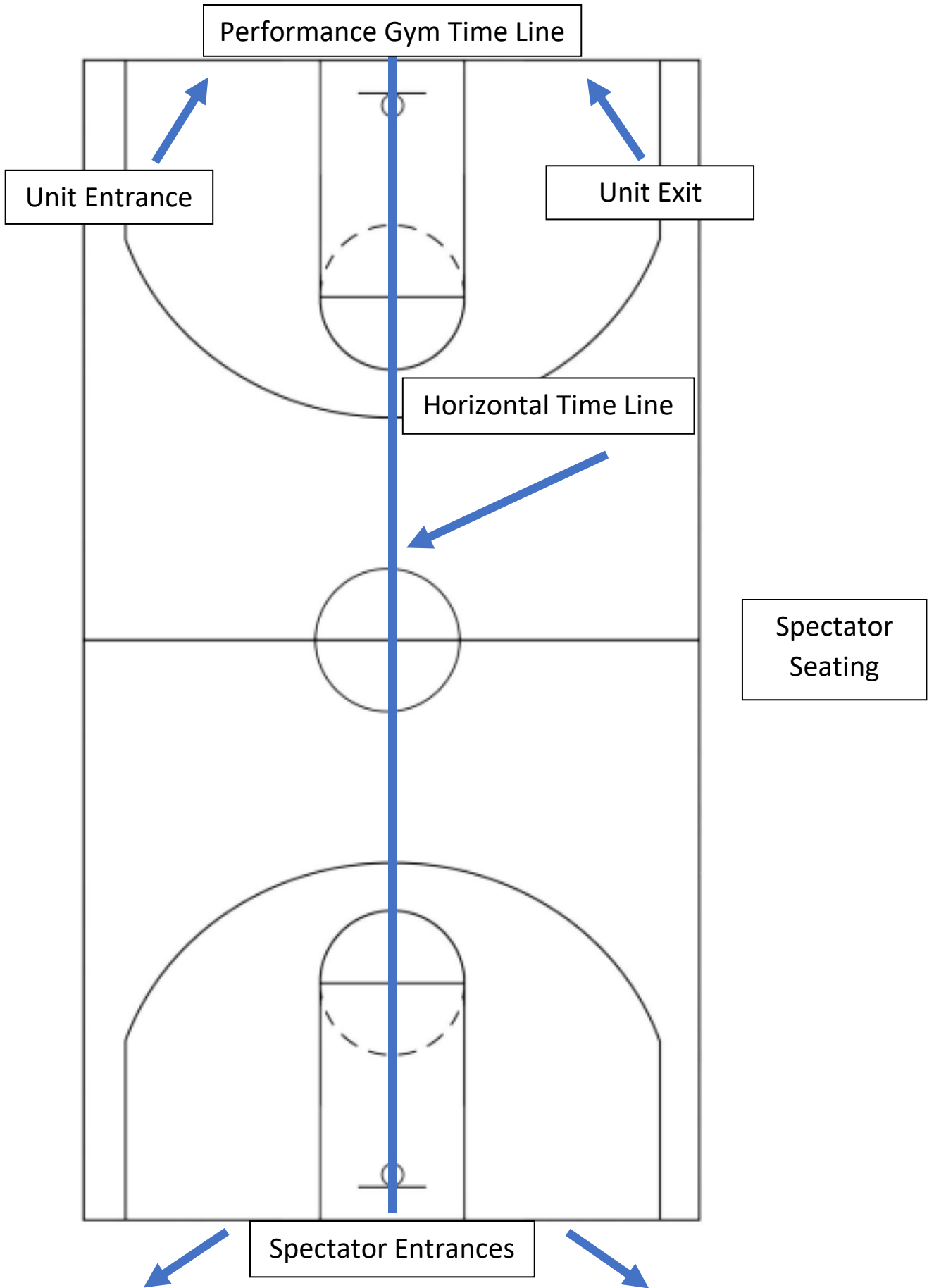
224

224

N 100 E

N 100 E





# Norwell Music Boosters

## Concessions

Pepsi Products/Gatorade	\$3.00 OR 2 / \$5.00
Water	\$2.00
Popcorn / Candy	\$2.00
Pickle	\$1.00
Sucker / Airheads	2 / \$1.00
Cheese cup a la carte	\$0.50
Hot Dog (plain)	\$2.00
Hot Dog w/cheese	\$2.50
Nacho w/cheese	\$3.00
Nacho w/ cheese and pulled pork	\$6.00
Pulled Pork sandwich	\$5.00
Hot Pretzel – plain or w/cheese	\$3.00

